

Opening PDF Files from Webpage Links

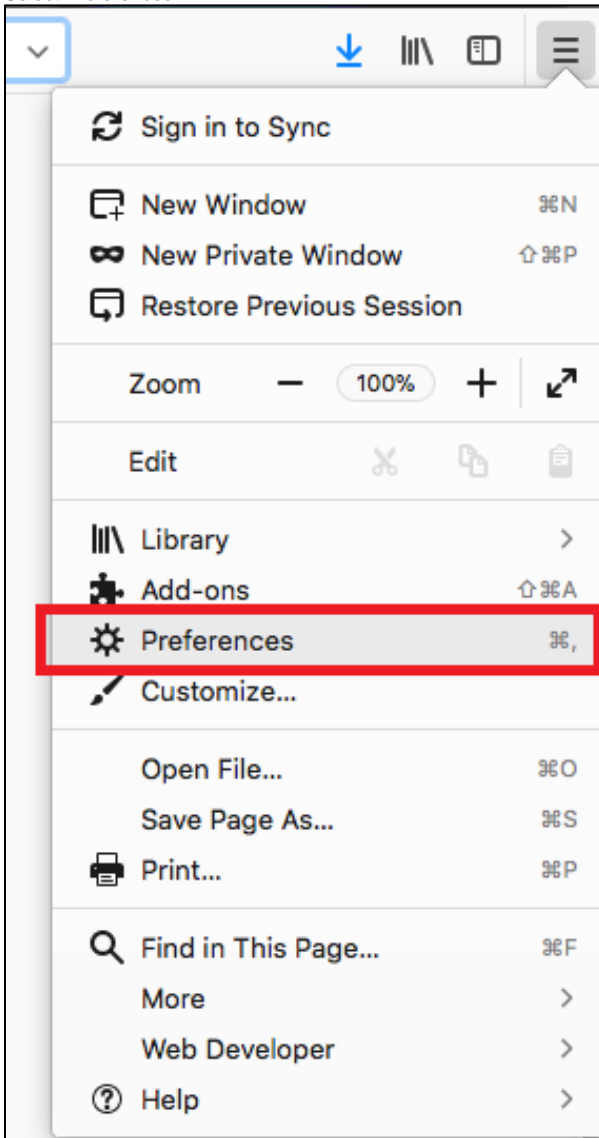
When you click a PDF link on a web page, it can open either within the web browser or directly in Acrobat Reader DC or FoxitReader. Each browser has its own settings to control how PDF's open from a web page. Browsers such as Mozilla Firefox and Google Chrome offer a built-in PDF viewer that does not support XFA-based PDF forms. To view XFA-based PDF forms in these browsers, you must configure to open PDFs using your default Windows PDF reader.

1. On your computer, open Chrome.
2. Type **chrome://settings/content/pdfDocuments** in the address bar.
3. Turn on **Download PDF files instead of automatically opening them in Chrome**.

PDF links will now open directly in your default Windows PDF reader.

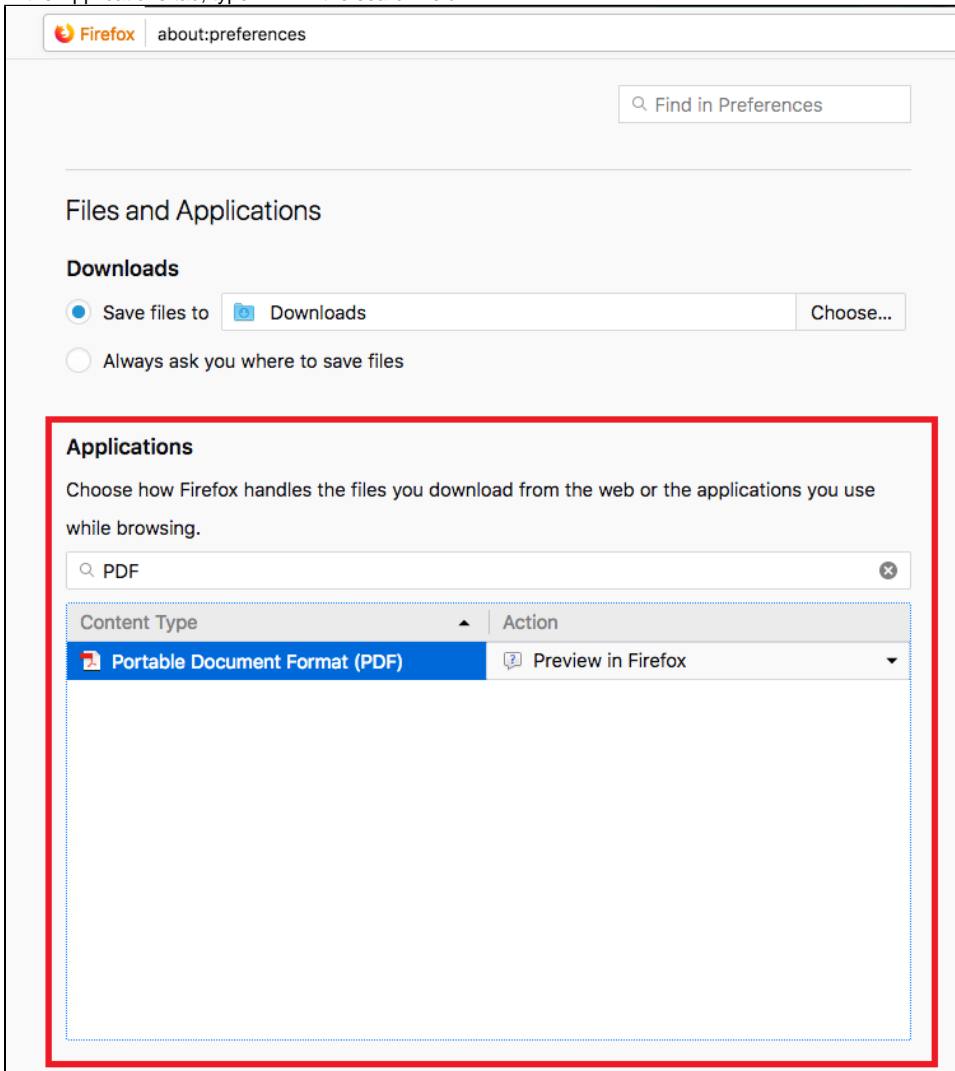
1. On your computer, open Firefox.

2. At the top right, click open menu
3. Select Preferences

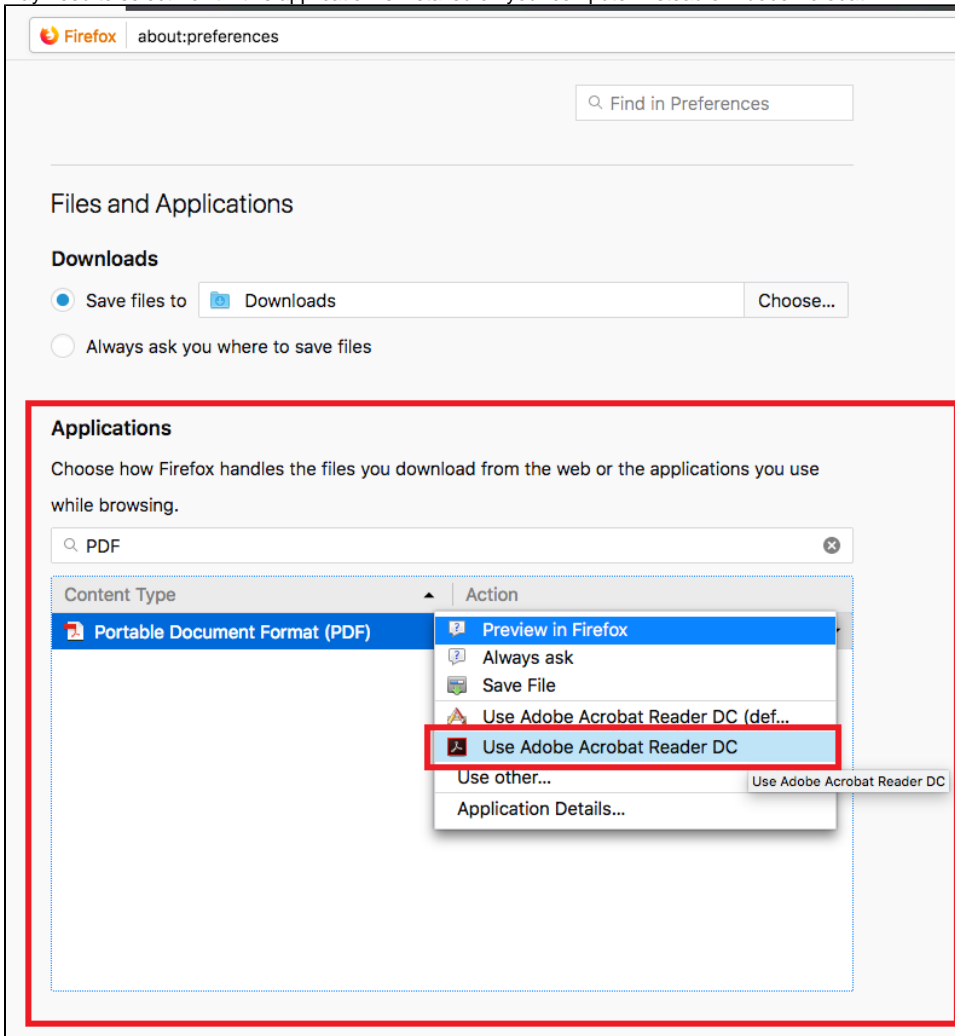


4. Scroll to **Applications**.

5. In the Applications tab, type **PDF** in the search field.



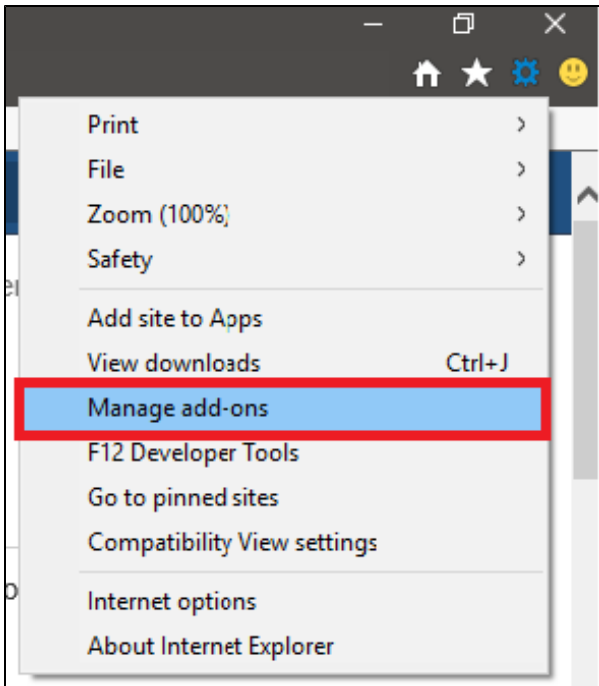
6. For Portable Document Format (PDF) content type in the search result, select Use Adobe Acrobat (in Firefox) from the Action drop-down list. You may need to select Foxit if this application is installed on your computer instead of Adobe Acrobat.



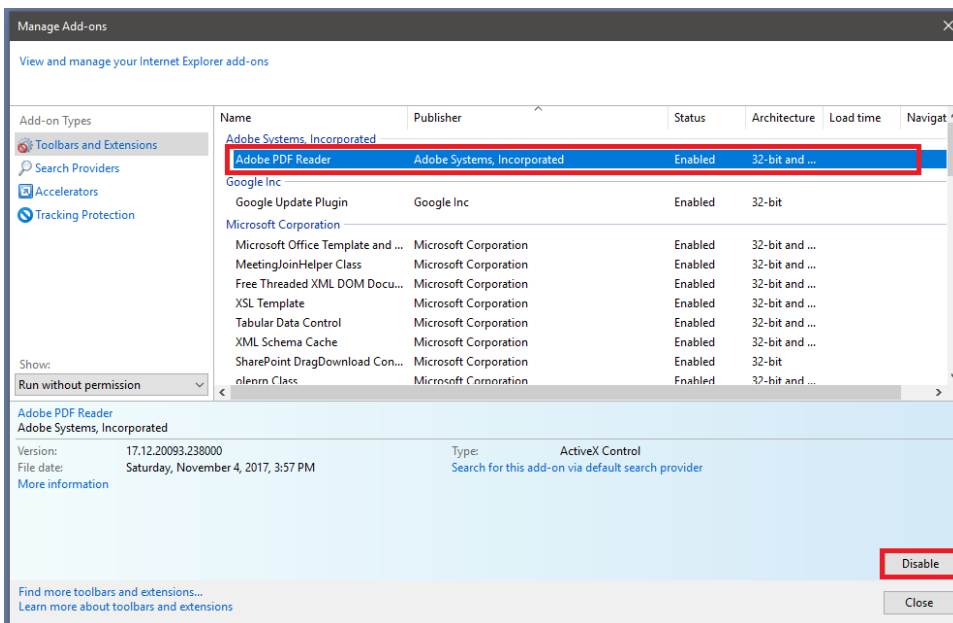
7. Restart Firefox.

PDF links will now open directly in your default Windows PDF reader.

1. On your computer open Internet Explorer
2. Select **Tools**  **> Manage Add-ons**



3. Under **Add-on Types**, select **Toolbars And Extensions**
4. In the Show menu, select All Add-ons.



5. In the list of add-ons, select Adobe PDF Reader. Note: If you do not see the Adobe PDF Reader add-on, try the other options on the menu. For example, on some systems, the add-on appears when you select Run Without Permission.
6. Click the Enable or Disable button (it toggles depending on the status of the selected add-on):

Enable sets the Adobe PDF Reader add-on to open PDFs in the browser.

Disable turns off the add-on so it does not open PDFs in the browser.

ITS Help Desk

(850) 474-2075
helpdesk@uwf.edu